

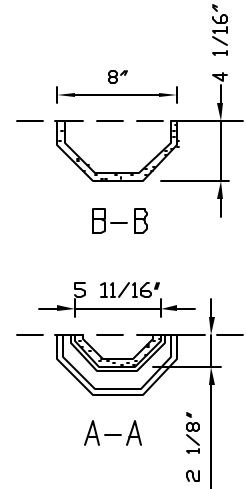
FEATURES AND SPECIFICATIONS

Material meets the requirements for non-combustibility in accordance with ASTM E-136

- High definition, crisp details
- Adjustable height
- Fast, easy installation
- Material is sealed from the factory and requires no further finishing
- Riser panel dimensions as supplied:
43" X 9" X 7/8"

- Supplied in 4 pieces
- Net weights:

Complete mantel:	110 lbs
Mantel top:	45 lbs
Each mantel leg:	20 lbs
Riser panel:	25 lbs
- Crated weight: 140 lbs



All dimensions & weights are approximate

DO NOT SCALE

Tel: 1-800-665-3454

Copyright (c) 2006 Architectural Mouldings Ltd.
Information contained in this drawing shall not be copied or used without the express permission of Architectural Mouldings Ltd.

Fax: 1-800-481-4445

Date: July 26, 2006

<http://www.balmer.com/facts/4138tc.pdf>